



HOW TO **GUIDE**
PET CLIPPING AND TRIMMING



INDEX

IMPORTANT SAFEGUARDS	3
USEFUL INFORMATION ABOUT YOUR PRODUCT	5
BLADES	5
CLIPPING	6
TRIMMING	7
TIPS AND ADVICE	
FEET	8
FACE & THROAT	9
STOMACH	10
BODY	10
REAR LEGS & ARMPITS	11
FRONT LEGS	11
EARS	12
PRODUCT INSTRUCTIONS	
SUPERGROOM - WM6872	
CORD/CORDLESS DOG CLIPPER	13
KMSS / SS PRO - WM6248 / 9777	
MAINS POWERED DOG CLIPPER	18
SUPER TRIM - WM6592	
RECHARGEABLE DOG TRIMMER	23
COAT TYPES	26

These clippers and trimmers are intended for home use only and for clipping and trimming purposes only

Please read all instructions carefully to familiarise yourself with the product before using.
Save these instructions for future reference.

For any further assistance or information call Customer Services on

T: 01227 740066

or visit

W: www.wahl.co.uk

E: customer.services@wahl.co.uk

IMPORTANT SAFEGUARDS

When using your electrical appliance, basic safety precautions should always be followed, including the following:

REQUIREMENTS

- ▶ Read the instruction manual in full to familiarise yourself with the product before the first use.
- ▶ This appliance can be used by children from aged 14 years and above and persons with reduced physical, sensory or mental capabilities, or lack of experience and knowledge, if they have been given supervision or instruction concerning use of the appliance in a safe way and understand the hazards involved. Children shall not play with the appliance. Cleaning and user maintenance shall not be made by children without supervision.
- ▶ Use this appliance only for its intended purpose.

HAZARDS



Danger! Electric shock due to damage to appliance

- ▶ Do not operate the appliance with a broken cord, plug or charger, or if the appliance malfunctions, or is dropped or damaged in anyway.
- ▶ Any servicing or repair must be performed by Wahl (UK) Ltd or a suitably qualified professional
- ▶ The use of attachments that are not supplied by the manufacturer may cause fire, electric shock or injury and damage to the appliance.



Danger! Electric shock due to penetration of liquid

- ▶ To protect against risk of electrical shock, never immerse the unit or let it come into contact with water or any other liquids. Do not use the unit with wet hands. If the appliance should become wet, damp or fall in water, remove plug from mains socket immediately. Do not put your hands in the water. Do not take into bathroom.



Danger of explosion

- ▶ Never use the appliance where aerosol (spray) products are being used or where oxygen is.
- ▶ Do not expose the appliance to temperatures below 0°C and above +40°C for any length of time. Avoid direct exposure to sunlight.



Warning! Injuries due to incorrect handling

- ▶ Cutting blades may become hot after prolonged use.
- ▶ Switch off the appliance and unplug from outlet when not in use, before putting on or taking off attachments and also before cleaning the appliance.
- ▶ Never use your appliance without paying attention! Except when charging always unplug this appliance from the electricity outlet immediately after using.
- ▶ These appliances are intended for pet hair trimming and clipping only



Caution! Danger of product damage

- ▶ Do not wrap the cord around the appliance.
- ▶ Do not use outdoors or in damp areas.
- ▶ Never carry the unit by its power cord.
- ▶ Do not drop or insert any object into any opening.

Emission sound pressure level: max. <70 dB(A)

Vibration: < 2,5 m/s²

USEFUL INFORMATION ABOUT YOUR PRODUCT

Essential information

For maximum efficiency, durability and satisfaction from Wahl clippers and trimmers, please note the following points:-

- Regularly apply a few drops of oil to the blades during clipping/trimming. Clipper oil lubricates the blades and will ensure your clippers or trimmers perform to their maximum capacity. Without oil, friction is increased therefore generating heat. If blades are getting hot then insufficient oil is being applied or the blades need cleaning or sharpening.
- Always ensure the animal coat is dry, as clean as possible and brushed to remove tangles, grease and dirt particles from the hair.
- During operation, take time to regularly brush hairs and dirt from the blades.
- We recommend use of Wahl Hygienic Spray to ensure grease and dirt particles are flushed from the blade surface. **Do not** use water to clean the blades.
- Always oil the blades after cleaning.
- Always clean your machine and blades thoroughly when you have finished clipping. **Do not** separate the top and bottom blade when cleaning.
- If your product has an air filter ensure it is clear of obstructions to avoid overheating the motor.
- Whenever storing your appliance, disconnect all cables and store your clipping/trimming kit in a dry, temperate environment.
- Always oil your blades before use and before storage to prevent atmospheric moisture causing damage to the blade surface.

BLADES

The blades are the single most important part of a clipper or trimmer and must be well maintained at all times for maximum cutting performance.

Cutting hair does not blunt the blades. Abrasive particles on your pet's hair, such as dirt, sand, grease, etc will blunt the blades.

Blades will not cut if abrasive particles are picked up and carried by the oil film between the blades. These particles tend to separate the blades from each other and pull the hair as opposed to cutting it cleanly. Keeping your blades well oiled performs the following important functions:-

- Provides a low friction, very thin film lubricant between the cutting blades so that the blades can take a full cutting stroke without becoming hot from frictional heat.
- Flushes abrasive particles and hairs out from between the blades.

If you cut into dirt, immediately clean your blades with Wahl Hygienic Spray or Wahl Clipper Oil to flush out the dirt.

CLIPPING

Clipping is ideal for removing hair evenly and creating an appearance that may not be possible with scissors. It is a relatively fast and effective way to obtain a manageable length for the coat, although it may be necessary to provide regular breaks for you and the dog. To achieve the best results, follow the advice below and do not expect to get it right first time. Clipping can take a great deal of practice to achieve a smooth, even finish. If you require information specific to your dog, we recommend you consult a professional groomer or vet for further advice.

Choosing the Right Clipper

When you have decided that you want to clip your dog at home, it is essential that you select the correct clipper for your pet's coat. Consider the type of hair, is it thick, course or fine? Then consider how thick the coat is, is there more than one hair type? In general, the thicker, denser and curlier the coat, the more power will be required to cut through it efficiently. For further information on coat types see page 30-31.

Before you Start:

- Wash and dry the dog to ensure any dirt or debris is removed from the coat. Grit and coat grease will blunt clipper blades prematurely.
- Ensure the hair is dry and well combed through, free from any knots or tangles.
- Ensure you have the right clippers for the job.
- Oil the blades and check the equipment is in good working order before you start.
- If you are using a rechargeable machine ensure there is sufficient battery charge otherwise the blades may pull at the hair instead of cutting it.
- Allow the dog time to get accustomed to the noise and vibration of the clippers.
- In the early stages it may be beneficial to ask someone to hold your dog for you.
- Keep the clipper blades well oiled and clear of cut hair. Hot blades can indicate insufficient oil, or the blades may be blunt and require sharpening or replacing.

Tips on Clipping:

- The first time you cut your pet's hair, only cut a small amount until you are accustomed to how long each guide comb leaves the hair. Start with the largest comb and then use shorter combs until the desired result is achieved.
- Use the attachment combs to increase the clipping length. The combs included with the kit allow various cutting lengths.
- For a uniform result allow the clipper to pass its way through the hair – do not try to force it through at a faster rate.
- Some breeds need to be clipped more frequently than others.
- When clipping for the first time, the clipping process will be slow. Try to move with your dog when clipping. After a few sessions, you will develop your own comfortable style and grooming will take less time.
- Always clip with the natural fall of the hair on the body and legs. Working against this natural fall will cut the coat approximately 50% closer. This technique may be used when clipping the face, throat, feet and tail.

Clipping Basics

1. Place your dog in the area you wish to work. If necessary, secure the dog so it cannot move around too much. If you are using a grooming table it is essential that the dog is prevented from falling off.
2. Hold the clippers in your hand in a similar way to how you would hold a pencil and balance them evenly.
3. Select the length of hair that you wish to leave on the dog. Some clippers feature a taper facility for variable cutting lengths. For longer lengths it will be necessary to use an attachment comb fitted to the clipper blade.
4. Turn the machine on and when the dog is comfortable with the noise and vibration begin clipping from the base of the skull. Keep the large, flat surface of the clipper blade parallel to the coat surface you are clipping. Do not angle the clipper teeth into the skin as this can cause injury and reduce the effectiveness of the clipper.
5. Move the clippers through the coat with smooth, gentle strokes following the lie of the hair. Do not push the clippers through the coat too quickly as this will cause hairs to become clogged between the blades. If you go against the lie of the coat this will cut the hair very short and may cause a skin reaction.
6. Clip both sides of the body from the sides of the neck to the shoulder joint on the front legs and down to the thigh on the rear legs. Areas around the elbows, inside the back thighs and under the belly can be prone to tangles and highly sensitive, so ensure they are knot-free before clipping to prevent any pain or distress to the animal.
7. Work through the coat from front to back working away from the eyes and nose. A smaller trimmer is recommended for the facial area.
8. Once you have completed the body, move onto the legs and tail. These areas are often cut using scissors or a trimmer. If you wish to leave the hair longer then use an attachment comb fixed to the clippers to increase the cutting length.
9. When clipping and trimming is complete comb or brush through the coat to remove loose hair.

***Always oil the blades before you begin clipping and clean and oil them when you have finished to prevent moisture in the air causing pitting and deterioration to the blades.**

TRIMMING

There are very few dogs that will not benefit from a little trimming at some time in their lives, however, trimmers are limited in their capability and should not be confused with clippers. For dogs that regularly attend a dog groomer, there may be opportunities for interim trimming to maintain areas such as face, chin, ears and feet between regular grooming salon visits.

Choosing the Right Trimmer.

When selecting a trimmer consider how thick the hair is on your dog and understand that there are only a few areas where a trimmer will be effective.

If the trimmer is powered by batteries then its effectiveness will be governed by the power of the batteries. In general, areas for trimming are quite small and intricate. Ensure the trimmer has a suitable blade for precision.

Before you Start:

- If you have washed the dog, ensure the hair is dry and well combed through, free from any knots or tangles.
- Ensure you have the right trimmers for the job.
- Oil the blades and check the equipment is in good working order before you start.
- Allow the dog time to get accustomed to the noise and vibration of the clippers.
- If you are using a rechargeable machine ensure there is sufficient battery charge otherwise the blades may pull at the hair instead of cutting it.
- In the early stages it may be beneficial to ask someone to hold your dog for you.
- Keep the trimmer/clipper blades well oiled and clear of cut hair. Hot blades can indicate insufficient oil, or the blades may be blunt and require sharpening or replacing.

Trimming Basics

If you have used the trimmers before ensure the blade is sharp and well oiled. There should be no signs of rust or broken teeth on the blade as this will affect the cutting performance and may cause injury to the dog.

The area being trimmed should be clean and free from mud, dirt or other foreign matter.

Trimmers are designed to cut through hair and any other matter will blunt the blades and affect the performance and lifespan of the product.

Ensure that you keep any hair that you do not want to trim away from the blades.

1. Oil the blades and check the equipment is in good working order before you start.
2. Hold the clippers in your hand in a similar way to how you would hold a pencil and balance them evenly.
3. Select the length of hair that you wish to leave on the dog. For longer lengths it will be necessary to use an attachment comb fitted to the trimmer blade.
4. Ensure the pet is kept still. Keep the large, flat surface of the clipper blade parallel to the coat surface you are trimming. Do not angle the trimmer teeth into the skin as this can cause injury and reduce the effectiveness of the trimmer.
5. Move the trimmers through the coat with smooth, gentle strokes following the lie of the hair. Do not push the trimmers through the coat too quickly as this will cause hairs to become clogged between the blades. If you go against the lie of the coat this will cut the hair very short and may cause a skin reaction.

TIPS AND ADVICE

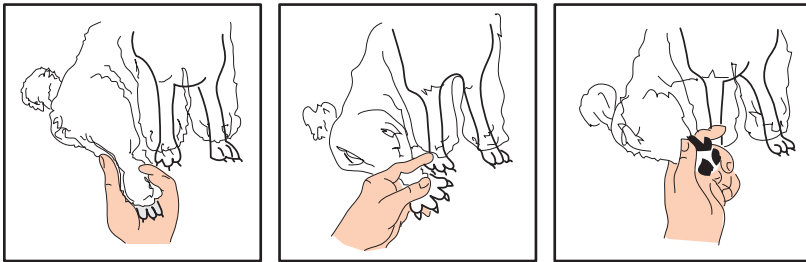
FEET

Most dog breeds experience excessive hair growth around their feet and it can be beneficial to remove some of the long hair for the comfort of the dog. During snow and wet periods, long hair between the pads can collect ice and mud which may become very uncomfortable for the dog. In the worst cases it can prevent the foot drying properly and lead to further skin complications.

In the summer, one of the few areas from which a dog can sweat is their pads. The removal of excess hair will assist in their natural ability to cool themselves. A compact trimmer is ideal for removing hair in between the pads and cutting the hair around the outside of the foot and from in between the toes. Alternatively a clipper may also be used, but will require a little more care as the blades are considerably bigger.

Tips for clipping feet

1. Have the dog sit facing you. Bring the rear leg forward and clip the sides of the foot from the toes to the end of the nail. Clip on top of the toes, stopping at the ankle joint. Do not clip up the ankle.
2. Spread the toes apart with your thumb and forefinger. Trim the hair in between the toes being careful not to nick the skin webbing between the toes.
3. Place your thumb under the pad and apply light upward pressure to spread the bottom pads. Trim between the toes and pads, again, be careful not to nick the foot webbing. Finish off by trimming any stray hairs with scissors.
4. Repeat for the other 3 feet.



FACE & THROAT

Many dog breeds, especially medium and longer coated dogs, or terrier types need some simple trimming around their face, eyes and mouth.

Rather than using clippers or scissors, many owners find a small trimmer with a compact blade, useful in resolving this issue. Excessive hair around the mouth, which falls into food bowls, can cause unpleasant smells and harbour bacteria. Trimming this to a manageable length is a simple and inexpensive solution.



Tips for clipping face and throat

1. Be very careful around this area, cutting too close may cause razor burns. Always clip in the direction of the lay of the coat. If necessary pull the ears back to keep them clear of the area to be clipped.
2. Never use the clippers above the eyes or on the muzzle area.
3. Hold the muzzle with your free hand. Clip from the ear to the outside corner of the eye in a straight line.
4. Stretch the skin at the outside corner of the left eye upward and backward. Clip carefully under the eye then repeat on the other side.

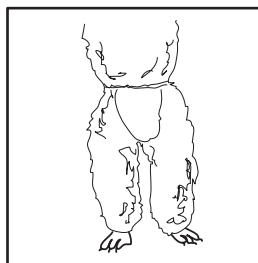
5. With your free hand, stretch the corner of the mouth with your thumb, using the rest of your hand to hold the mouth shut. Clip around the mouth and side of the face then repeat on the other side.
6. Holding the muzzle, clip the area between the eyes and around the nose. To clip the muzzle, clip away from the eyes towards the nose. Hold the dogs head straight, with the chin up, then clip the underneath of the muzzle. The Adam's apple is normally the stopping point but you may clip lower if necessary.
7. Clip the rest of the throat area in the same direction as the lie of the coat.

STOMACH

Ensure the hair is free from knots and tangles as the stomach area can be very sensitive.

Tips for clipping the stomach

1. Stand the dog facing you.
2. If possible lift the front legs to expose the stomach.
3. Clip from a point above the testicles or vulva in a straight line to the end of the rib cage.
4. Apply only light pressure and take care not to catch the vulva or testicles.
5. Extreme caution is required on the stomach area to avoid cutting the nipples.
6. Always operate the clippers in the same direction as the hair growth.
7. Do not clip this area too short.

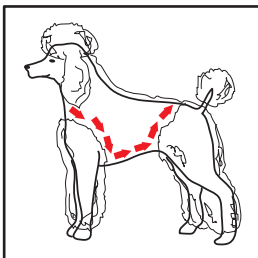
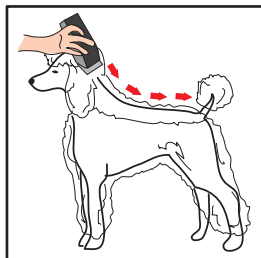


BODY

When clipping the body, it is useful to stop frequently to brush and fluff the coat to remove cut hair. This will help in achieving a smooth finish.

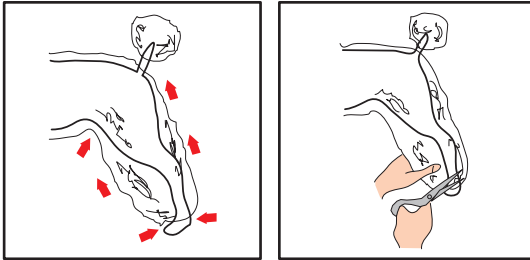
Tips for clipping the body

1. Clip along the back of the pet, starting at the base of the skull, and cutting through to the base of the tail.
2. Now move to clip the hair between the shoulders and the hips.
3. Continuing to work in the same direction as the hair growth, clip the hair under the chest from behind the front legs to the end of the rib cage.
4. Scissor trim any areas that require tidying up.



REAR LEGS & ARMPITS

Take extreme care when clipping around the armpit and the flank. It is particularly easy to catch the skin in the clipper blades in these areas and cause injury to the dog. This risk increases in older dogs whose skin has loosened and folds or wrinkles may be present.



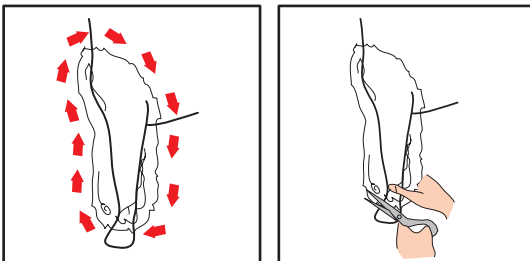
Tips for clipping the rear legs & armpits

1. Brush the hair on the legs in an upward and outward motion to fluff it up.
2. Start at the foot by clipping any hair that falls over the foot.
3. From the hip, clip down to the ankle removing a little hair at a time. If you want to achieve a closer clip on the legs it is possible to work upwards from the ankle to the hip.
4. When you clip around the hip blend the hair so it tapers into the shorter body hair.
5. If you are using attachment combs on the legs, always complete your stroke, do not stop midway.
6. Repeat this process with the other back leg, ensuring you achieve the same size as the first leg.

FRONT LEGS

Tips for clipping the front legs

1. With the dog facing you, comb the hair on the front legs up and out.
2. Following the lay of the hair clip the front legs to match the back legs.
3. At the shoulder comb the hair and clip it to blend with the shorter hair on the body.
4. Comb the hair on the chest and between the front legs and clip it to the length the shoulder and body hair.



EARS

Some dog breeds experience excessive hair growth in and around their ears. For breeds such as spaniels, this can inhibit the circulation of air and lead to issues. The ability to trim the hairs around the ear and inside the ear will have positive impact.

Tips for clipping ears

1. With the dog facing you, clip from the hair on the ear in the same direction as the coat growth. For upright ears (Fig A) start at the base and clip towards the top. For drop ears, (Fig. B) start at the top of the ear and clip downward.



Fig.A Upright ears

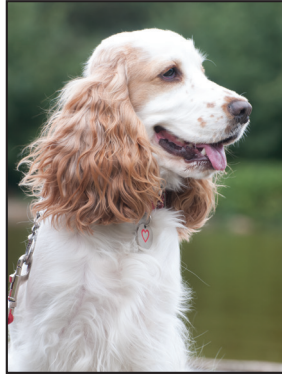
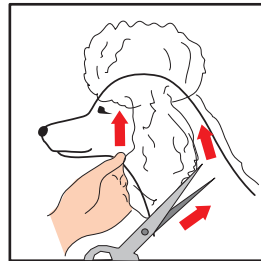
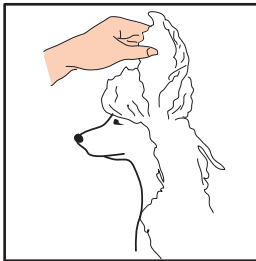
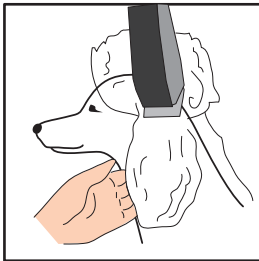


Fig.B Drop ears

2. Lay the ear in the palm of your hand. Clip the outside, then the inside.
3. Hold the ear with your free hand, then carefully tidy the hair at the edges with scissors. It is advisable to place your fingers between the ear and the scissors to prevent catching the dog's skin with the scissors.



SUPER GROOM CORD/CORDLESS DOG CLIPPER

Model: Super Groom - WM6872





Model: Super Groom - WM6872

Description or parts (Fig. 1)

A	Blade set
B	On/off switch
C	Charging indicator
D	Oil for blade set
E	Blade cutting length adjuster
F	Base of clipper
G	Plug-in transformer
H	Clipper plug
I	Attachment combs
J	Cleaning brush

Operation

Only operate the appliance with an alternating current and with the voltage stated on the nameplate. This clipper features an adjustable blade. To change the length of cut from the blade adjust the small black lever (E) at the base of the blade. This lever moves from left to right through 5 positions. The shortest cutting length (0.7mm) will be achieved when the lever is switched to the right. Move the lever to the left to increase the length to a maximum of 3mm at the extreme right.

Charging the battery

Before the clipper is used for the first time, it should be charged for approximately 16 hours.

1. Connect the clipper plug (H) on the plug-in transformer to the base of the clipper (F).
Battery over-charging is prevented thanks to intelligent charge management.
2. Connect the plug-in transformer (G) to the mains socket (Fig. 2b).
3. Switch off the clipper using the on/off switch (Fig. 3b).

NOTE: During charging the charging indicator (C) is illuminated. After the appliance has been removed disconnected from the power cord, the display goes out. It takes no more than 16 hours for the clipper to charge to full capacity.

Battery operation

Switch on the clipper using the on/off switch and switch off after use (Fig. 3a/b).

NOTE: With the battery fully charged, the appliance can be operated for up to 100 minutes. This capacity is attained after approximately 5 – 10 charging cycles. In case of insufficient maintenance of the blade set, the operating time can be reduced considerably.

Mains power operation

This clipper can be powered directly from the mains if you do not wish to work cordless.

1. Connect the clipper plug (H) on the plug-in transformer to the base of the clipper.
2. Connect the plug-in transformer (G) to the mains socket (Fig. 2b).
3. Switch on the clipper using the on/off switch (Fig. 3b).

Cutting with an attachment comb

To increase the length of coat that is cut, this clipper may also be operated with an attachment comb. 6 combs are included with this kit offering cutting lengths as follows:-

No. 1 comb	4.5mm
No. 2 comb	6mm
No. 3 comb	9mm

No. 4 comb	12mm
No. 6 comb	18mm
No. 8 comb	25mm

Attaching / removing the comb

1. Slide the attachment comb onto the blade set in the direction of the arrow until it reaches the limit (Fig. 6a).
2. The attachment comb can be removed by pushing it in the direction of the arrow (Fig. 6b).
3. Attachment combs should be removed after every use.

Changing the blade set

WARNING

The blade set is designed to cut and may cause injury or material damage if handled incorrectly

1. Switch off the appliance using the on/off switch (Fig. 3b).
2. Remove any attachment combs.
3. The blade should be removed by applying pressure to the top of the blade and pushing it away from the clipper in the direction of the arrow (Fig. 7a).
4. To attach the blade to the clipper, hook the small plastic lug at the base of the blade chassis into the small recess in the housing and press it down until it clicks into position (Fig 7b).
5. Replace a blunt or damaged blade set with an original spare part only. Spares can be ordered through your dealer or Wahl Customer Services at www.wahlstore.co.uk.
6. Lubricate the new blade set before use.

Note: If the small plastic lug at the base of the blade chassis is broken, this will prevent the blade staying on the clipper and a replacement will be required.

Maintenance

- Remove the attachment comb (Fig. 6b) after every use and lift the blade set away from the clipper (Fig. 7a). Use the cleaning brush to remove any cut hairs from the housing opening and from the blade set (Fig. 8). The cleaning lever on the blade set (Fig. 9a) can also be pressed. This allows the cut hairs that accumulate between the bottom blade and the top blade to be easily removed using the cleaning brush.
- Spray the blade set with hygienic spray to flush any dirt and hairs through the blade.
- Wipe away excess fluid then oil the blade set with clipper oil (Fig. 9).
- Only wipe the clipper with a soft, slightly damp cloth.

Note: For high performance, long lasting cutting performance, it is important to oil the blade set frequently, at least before and after every use.

If the cutting performance deteriorates after long use despite regular cleaning and oiling, the blade set should be replaced.

Trouble Shooting

The blade set is cutting badly.

The blade set is pulling the hair out.

The battery life is too short.

- Cause – The blade set is dirty – Clean and oil the blade set (Fig. 8/9).
- Cause – The blade set is blunt or worn out – Replace the blade set (Fig. 7).

Skin injury

- Cause – Too much pressure on the skin as you clip – Apply less pressure.
- Cause – Cutting angle is too high – Hold the appliance so the flat surface of the blade is flat to the skin of your pet.
- Cause – Broken teeth on the blade – Replace the blade set (Fig. 7).

Charging indicator light does not light up

- The clipper must be switched off for charging
- There may be a defective power supply. Ensure there is a faultless contact between the plug-in transformer and the socket. Check the mains cable for damage. Ensure the main power supply is working correctly.

BATTERY REPLACEMENT, REMOVAL AND DISPOSAL

Battery Replacement

For battery replacement the entire, intact trimmer should be sent to: Wahl (UK) Ltd Customer Services (the address can be found on the reverse of this booklet) or taken to a suitably qualified professional. The battery should only be replaced by the original manufacturers spare.

Battery Removal and Disposal

At the end of its life, when it will no longer take a full charge, the battery in your clipper must be removed and recycled/disposed of correctly. Batteries should be disposed of at an official collection point. If you are having trouble removing the battery you can also return the product to Wahl (UK) Ltd Customer Services, who will dispose of it in an environmentally safe way.

To remove the battery, follow these steps:

1. Unplug the transformer from the outlet, disconnect from the clipper and allow the batteries to completely run down before disassembly.
2. Remove the blade.
3. Using a Torx 7 screwdriver, remove the 2 screws found under the blade.
4. Prize the clipper housing apart along the join in the upper and lower casing.
5. Remove the motor and PCB assembly.
6. Remove the battery by prizing up from the PCB (take care not to puncture the battery).
7. Apply tape to both ends of the battery before recycling/disposing.

WIRING

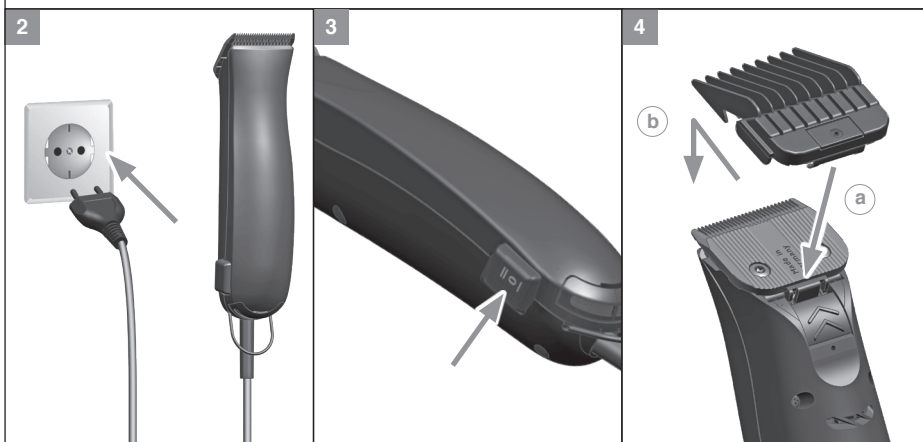
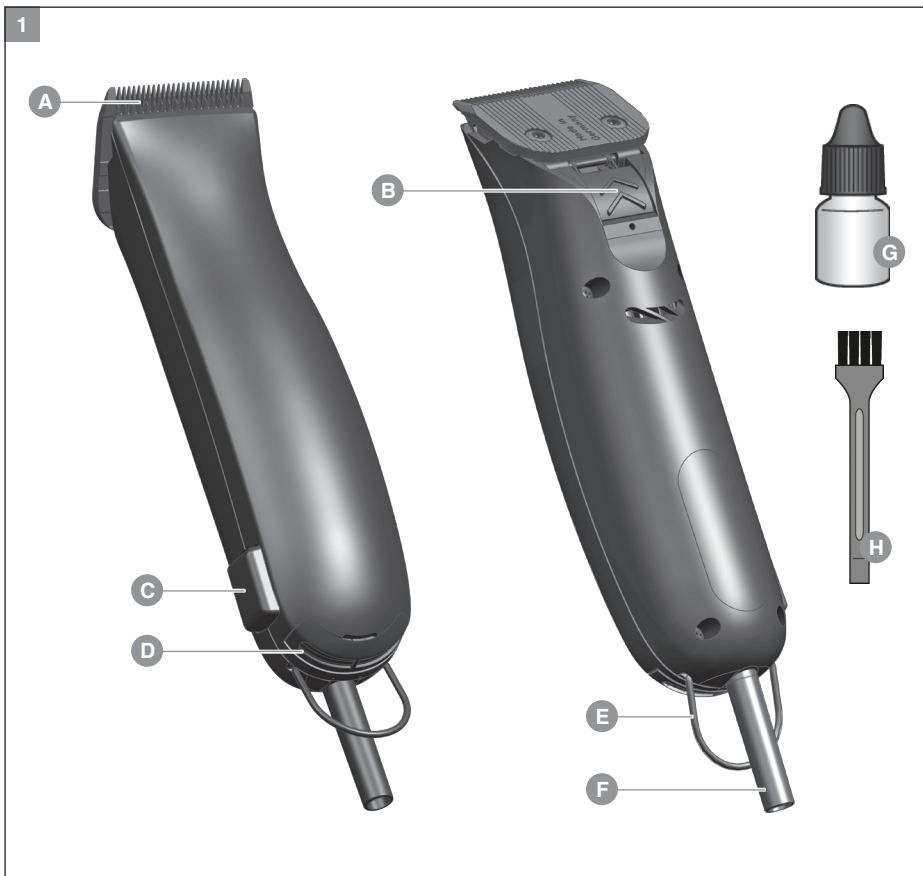
WARNING:

This product must only be used with the transformer supplied,
Should a replacement be required contact Wahl customer services.

KMSS MAINS POWERED DOG CLIPPER SS PRO MAINS POWERED DOG CLIPPER

Model: KM SS CLIPPER - WM6248

SS PRO CLIPPER - 9777





Model: **KM SS / SS PRO - WM6248 / 9777**

Product description of parts (Fig. 1)

- A. Blade set (#10 – 1.8mm)
- B. Release button for blade set
- C. On/off switch
- D. Air filter (Only applicable to KMSS)
- E. Hang-up loop
- F. Mains cable
- G. Clipper oil
- H. Cleaning brush

Operating Instructions

1. Ensure the clipper is switched off before connecting to the mains.
2. Connect the clipper to the mains (Fig. 2).
3. Ensure the blade is oiled before switching the clipper on.
4. Use the 'on/off' button at the base of the clipper to switch on the machine (Fig. 3).
5. When clipping we recommend the blades are cleaned and re-oiled at regular intervals.
6. Never use a blade that is damaged in any way as this may cause injury to the pet.
7. Always switch the appliance off and disconnect from the power supply when you have finished using it.

Changing the Blade Set

To remove

1. For optimum performance we recommend that only blades produced by Wahl or Moser are used with these clippers.
2. Ensure the appliance is switched off.
3. Press the release button B (Fig. 6a) into the clipper and pull the blade set back towards you (Fig. 6b).
4. Lift the blade set upwards away from the clipper (Fig. 6c).

To replace

Ensure that the clip (Fig. 7.) is folded out. If this is not the case, you can fold out the clip by placing a flathead screwdriver under the clip and gently encouraging it upwards.

1. The snap-on blade should be placed onto the clip (Fig. 8a).
2. Lock the blade into place by pushing the blade towards the clipper until it snaps shut (Fig. 8b).
3. If the blade has not locked into place, switch the clipper on and press the blade firmly towards the clipper until you hear it snap into place and the blade begins moving (Fig. 8b).
4. Always oil the blade before use.

Attaching and removing the attachment comb

This appliance can also be operated with an attachment comb. Attachment combs are used to extend the cutting length range.

1. Fit the attachment comb onto the bottom edge of the blade set (Fig. 4a) until it locks
2. Push the attachment comb over the cutting edge of the bottom blade (Fig. 4b).
3. The attachment comb can be removed by pushing it in the direction of the arrow (Fig. 5).
4. Once the top has been released from the blade, remove the bottom clips from the bottom edge of the blade set.

Clipping with the attachment comb in place

Various attachment combs are included with your kit.

#1 (3mm), #3 (9mm), #5 (16mm)

Additional attachment combs are available as an accessory at Wahlstore.co.uk.

When using an attachment comb, we recommend that the blade supplied with the clipper (#10 – 1.8mm) is used in association with the comb attachment.

Cleaning the Air Filter (Only applicable to KMSS)

To ensure a good supply of air to the motor it is essential that the air filter is cleaned regularly.

1. Remove the filter cover (Fig. 11a) and clean the air filter with the cleaning brush.
2. Re-insert the filter cover until it locks into position (Fig. 11b).

Cleaning the Blade Set

WARNING: The blade set must not be unscrewed
The blades must not be pushed apart and separated totally

- Remove the attachment comb (Fig. 5) after every use.
- Lift the blade set away from the clipper (Fig. 6).
- Use the cleaning brush to remove any cut hairs from the housing opening and from the blade set (Fig. 9).
- Push the top blade to the side (Fig. 9a) and removed any cut hairs from the top and bottom blade using the cleaning brush.
- After cleaning return the top blade to its initial position (Fig. 9b). The top blade should be aligned in the centre of the bottom blade.
- After cleaning we recommend you spray the blade set with hygienic spray to flush any dirt and hairs through the blade and defend against bacteria and viruses.
- Wipe away excess fluid then oil the blade set with clipper oil (Fig. 10).
- Only wipe the clipper with a soft, slightly damp cloth.
- Reattach the blade set after cleaning (Fig. 7/8). Switch the clipper on briefly to ensure the oil is evenly distributed.

NOTE: For high performance, long lasting cutting performance, it is important to oil the blade set frequently, at least before and after every use.

If the cutting performance deteriorates after long use despite regular cleaning and oiling, the blade set should be replaced.

General Cleaning and Maintenance

Regular cleaning will ensure a long service life for your clipper.

Always disconnect from the power source prior to cleaning.

We recommend using the Hygienic Spray to degrease and clean blades.

Do not use solvents or scouring agents to clean any part of your clipper or blades.

Water based lubricating solutions should not be used to oil the blades.

Never operate your clippers without applying oil to the blades.

Repeated oil application should be carried out during the clipping process.

Always oil blades before storing the clipper.

We recommend that your clipper is stored in a dry area and blades are removed.

Wahl recommend that this product is serviced by a qualified technician regularly to maintain performance and efficiency. (Manufacturer contact details on back page)

WIRING

KMSS CLIPPER - WM6248

WARNING: If the supply cord is damaged it must be replaced by the manufacturers service agent or a similarly qualified person in order to avoid a hazard.

The wires in the mains lead are coloured in accordance to the following code:

Blue Neutral (N) Brown live (L)

This appliance is fitted with a 3 pin plug which has a 3 amp fuse fitted.

If the plug supplied is not suitable for your socket or becomes damaged, it should be cut off and disposed of, and a suitable plug fitted as detailed below.

As the colours of the wires in the mains lead of this appliance may not correspond with the colour markings identifying the terminals in your plug, proceed as follows.

The wire which is coloured BLUE must be connected to the terminal in the plug which is marked with the letter 'N' or coloured BLACK or BLUE.

The wire which is coloured BROWN must be connected to the terminal in the plug which is marked with the letter 'L' or coloured RED or BROWN.

DO NOT connect either wire to the terminal in the plug which is marked with the letter 'E' or has the Earth symbol, or coloured GREEN or GREEN/YELLOW.

If a 13 amp (BS 1363) plug is used, a 3 amp fuse must be fitted. If any other type of plug is used a 5 amp fuse must be fitted either in the plug or adaptor at the distribution board. Replacement fuses should be approved to BS 1362

Fuse cover must be refitted when changing the fuse. If the fuse cover is lost the plug must not be used until a replacement is obtained. Information for obtaining the correct fuse is marked on the carrier itself and in the bottom of the fuse cavity in the plug. These may be obtained from Wahl (UK) Ltd.

WIRING

SS PRO CLIPPER - 9777

WARNING: If the supply cord / transformer is damaged it must be replaced by the manufacturers service agent or a similarly qualified person in order to avoid a hazard.

SUPER TRIM DOG TRIMMER

Model: SUPER TRIM TRIMMER - WM6592-800



OPERATING INSTRUCTIONS

Before the appliance is used for the first time it should be charged for 16 hours.

CHARGING THE RECHARGEABLE BATTERY

Connect the plug-in transformer to the power supply (fig1). Ensure the appliance is switched off, otherwise it cannot be charged (fig2b).

Place the appliance on the charging stand. Whilst charging the charging indicator will illuminate.

The charger indicator will go out when removed from the charging stand.

We recommend you only charge your appliance when its performance has deteriorated noticeably.

Longer charging times do not damage the appliance.

It takes approximately 16 hours for the appliance to be fully charged.

Use only the charging transformer supplied with this kit, **DO NOT** attempt to charge with any other transformer.

OPERATION OF RECHARGEABLE BATTERY

Using the ON/OFF switch, switch on the appliance (fig 2a) Switch off immediately after use.

ATTACHMENT COMB

Your appliance is supplied with a variable attachment comb. The attachment comb has five settings. The further the attachment comb is pressed on to the appliance the shorter the cutting length. In this way the cutting length can be varied between 3-6mm (fig 3).

To attach the comb, attach on to the appliance in the direction of the arrow until it locks into position (fig 4a).

To remove push the comb in the direction of the arrow (fig 4b)

CHANGING THE BLADE SET

The blade set can be removed by pushing the blade set away from the housing in the direction of the arrow see (fig 5a).

To replace blade set position it with the hook in the slot on the housing and press until it clicks into place (fig 5b).

CLEANING AND MAINTENANCE

Never immerse the appliance in water.

Remove the attachment comb after each use and clean the blade set using the cleaning brush.

Remove the blade set (fig 5) and clean the blade, press the cleaning lever (see fig 6). This allows you to remove any hairs and dirt between top and bottom blade with the cleaning brush (easy cleaning).

The charging contacts of the appliance must be kept clean. Use only a slightly damp cloth for cleaning the housing and charging stand never use solvents or scouring agents.

Oil the blade set regularly using the oil supplied (fig 7) to maintain the cutting performance and ensure a long service life. Replace the attachment comb to protect the blade when not in use.

The blade set should be replaced if cutting performance is reduced after extended use.

WIRING

WARNING:

This product must only be used with the transformer supplied,
Should a replacement be required contact Wahl customer services.

BATTERY REPLACEMENT, REMOVAL AND DISPOSAL

Battery Replacement

For battery replacement the entire, intact trimmer should be sent to: Wahl (UK) Ltd Customer Services (the address can be found on the reverse of this booklet) or taken to a suitably qualified professional. The battery should only be replaced by the original manufacturers spare.

Battery Removal and Disposal

At the end of its life, when it will no longer take a full charge, the battery in your clipper or trimmer must be removed and recycled/disposed of correctly. Batteries should be disposed of at an official collection point. If you are having trouble removing the battery you can also return the product to Wahl (UK) Ltd Customer Services, who will dispose of it in an environmentally safe way.

To remove the battery, follow these steps:

1. Unplug the transformer from the outlet, disconnect from the clipper and allow the batteries to completely run down before disassembly.
2. Remove the blade.
3. Using a Torx 7 screwdriver, remove the 2 screws found under the blade.
4. Prize the clipper housing apart along the join in the upper and lower casing.
5. Remove the motor and PCB assembly.
6. Remove the battery by prizing up from the PCB (take care not to puncture the battery).
7. Apply tape to both ends of the battery before recycling/disposing.

DISPOSAL

Handle with care! Environmental damage in the case of incorrect disposal.

Correct disposal will ensure environmental protection and prevent any potentially harmful impacts on people and the environment.

Adhere to the relevant legal requirements when disposing of the appliance.

Information on the disposal of electrical and electronic appliances in the European Community:

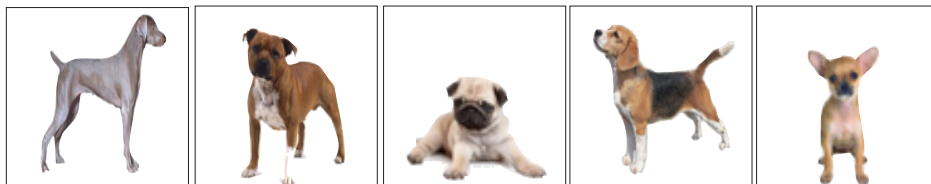
Within the European Community, national regulations are specified for the disposal of electrical appliances, based on EU Waste Electrical and Electronic Equipment Directive 2012/19/EU (WEEE). In accordance with this, the appliance can no longer be disposed of with the local or domestic waste.

The appliance will be accepted free of charge by local collection points or recycling centres.

Coat Types

Smooth Coats: Smooth and short coated breeds will rarely require clipping. The hair is not prone to knotting and, except in health or medical related situations it is seldom necessary. However, should you need to use clippers then generally a standard set of clippers priced between £30 and £50 will be sufficient.

Examples:



Weimaraner

Staffordshire Bull Terrier

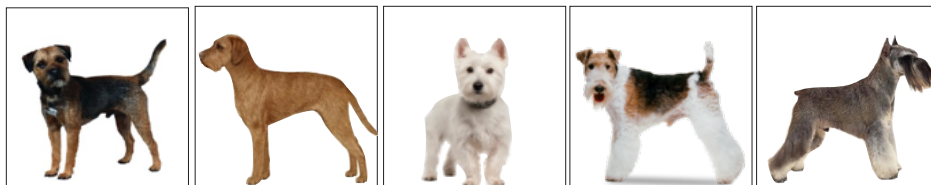
Pug

Beagle

Chihuahua

Wire Haired Coats: Dogs with wire haired coats often require either hand stripping or clipping. Many pet owners who have these breeds elect to use clippers to maintain the coat length as it is the fastest way. However clipping may change the density and texture of the coat so will not be ideal if you plan to show your dog. If you are unsure seek further professional advice before you begin clipping. Generally standard clippers with a good quality blade will work well on this coat type. Expect to pay between £35.00 and £70.00 for a good pair of clippers.

Examples:



Border Terrier

Wire Haired Vislar

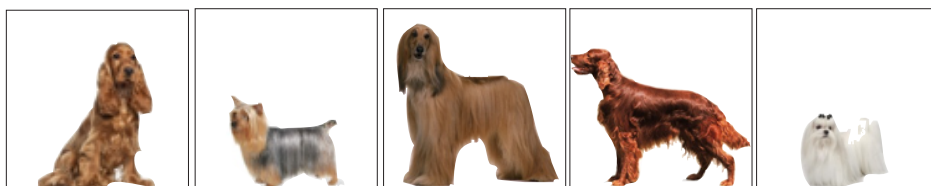
West Highland Terrier

Wire Haired Fox Terrier

Miniature Schnauzer

Silky Coats: Before commencing any clipping or trimming it is vital that the long silky coat has been combed through completely to remove any dead undercoat or debris. Most dogs with this coat type benefit from regular visits to a professional dog groomer to assist in the maintenance of the coat. However, with professional advice from your vet, breeder or groomer it is possible to maintain this type of coat at home. Some of these coats are more difficult than others, however, a reputable clipper between £50.00 and £100.00 will be sufficient for the job.

Examples:



Cocker Spaniel

Yorkshire Terrier

Afghan Hound

Irish Setter

Maltese

Double Coats: There are a wide variety of dog breeds with double coats. Some will require significant clipping, others may just benefit from frequent trimming and tidying. Take advice from a professional dog breeder or groomer if you are unsure what your dog needs. When clipping this coat type, the clipping machine must be powerful and the blades sharp to cope with the dense, soft undercoat and the course outer coat. Breeds such as Old English Sheepdogs or Spaniels can have very dense coats that require a good quality, powerful clipper. Expect to pay between £70.00 and £150.00+ for the right machine.

Examples:



Curly Coats: This coat type can be difficult to manage at home and will require generally require some routine clipping and trimming to maintain the coat and manage mats and tangles. Breeds such as poodles and some terriers require clippers that can cope well with dense and course hair. Expect to pay between £70.00 and £150.00+ for a machine that will cope well provide good results.

Examples:



WEEE /

WASTE ELECTRICAL & ELECTRONIC EQUIPMENT DIRECTIVE 2012/19/EU (WEEE)

At the end of this products life it should not be disposed of with general household waste. Care should be taken to dispose of in a suitable manner in accordance with your Local Authority regulation

GUARANTEE

This product is guaranteed against defects in material and workmanship for a period of 2 years from the date of original purchase or receipt as a gift.

The guarantee becomes invalid in the case of misuse or repair by unauthorised persons.

Should this product become defective during the warranty period, return it to the store of purchase together with your proof of purchase for repair or replacement without any charges to you.

This guarantee in no way affects your rights under statutory law in the United Kingdom.



WAHL (UK) LTD

Sterling House

Clipper Close

Ramsgate

Kent

CT12 5GG

Customer Services

T: 01227 740066

W: www.wahl.co.uk

E: customer.services@wahl.co.uk